

B. Tech Degree V Semester Examination, November 2005

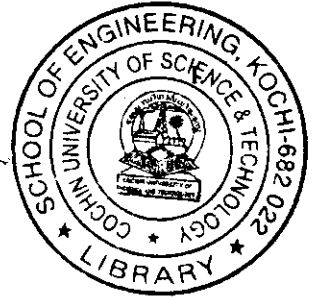
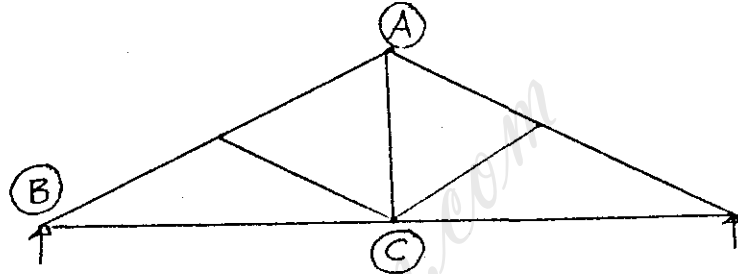
CE 506 (A) CIVIL ENGINEERING DRAWING (2002 Admissions onwards)

Time : 3 Hours

Maximum Marks:100

(Assume any missing data suitably)

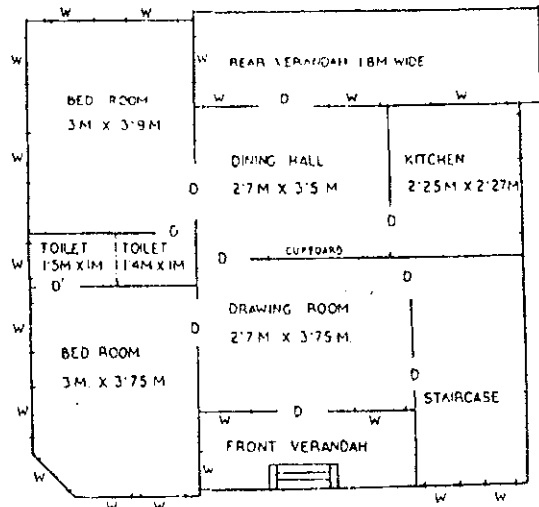
Sketch the details at junctions A, B and C of the given skeleton frame of a steel roof truss. Assume suitable dimensions. (30)



OR

- II. Prepare the line sketch of a residential house for a middle class family with the following specifications :
- Kitchen - 5.5 m²
 - Bedroom - 2 nos - 12 m² each
 - Drawing cum dining - 7.92 m²
 - Toilet - 2 nos attached
 - Stair room for future extension.
- (30)

- III. The line plan of a square building is shown in the figure. The dimensions given are internal dimensions.



Prepare to a suitable scale -

- (i) Plan
- (ii) Elevation
- (iii) Sectional elevation
- (iv) Rain water harvesting system.

(20)
(25)
(15)
(10)
