

To Get Latest BPUT
NEWS, Current Affairs &
Campus Information On
Your Mob Free Of
Cost Daily.
SAY UR FRIEND
*type JOIN IBPUT send to 567678

Total number of printed pages -7 B. Tech
BENG 1105

First Semester Examination - 2006

BASIC ELECTRONICS

Full Marks - 70

Time : 3 Hours

Answer Question No. 1 which is compulsory
and any five from the rest.

The figures in the right-hand margin indicate marks
for the questions.

1. Answer the following questions : 2×10

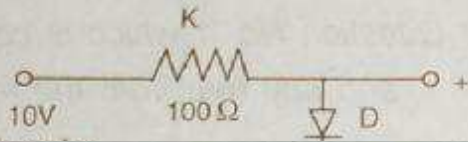
www.OdiaFilm.com

- (i) What is perception and why it is important ?
- (ii) Define the concept of human resource management.
- (iii) Describe the theory X and theory Y.
- (iv) Describe the co...

(b) Convert $(42.76)_{10}$ and $(125.2)_8$ into binary equivalent.

(c) Draw frequency response curve of a RC Coupled amplifier.

(d) Sketch the output waveform of V_o , when a 10V triangular wave with period T is applied at the input of the circuit given in fig.1.



Behaviour.

10

3. What is personality ? Discuss the determinants of personality.

10

4. Describe the factors that affect person perception. Discuss the issue of perception.

10

5. Discuss the five-stage model of group development.

10

5. Discuss the five-stage model of group development.

How groups differ from teams ?

10

How groups differ from teams ?

10

Identify the differences between leadership and group development.

3

(g) Name two applications of shift register as counter.

(h) For the circuit given in fig.2, what will be the current shown by the ammeter ?

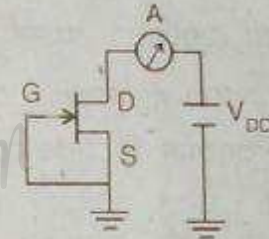


Fig - 2

(i) What do you mean by virtual ground in

www.orkut.co.in/Main#FriendAdd?rl=lo&uid=2933520217838768667

How

6. Ident